

Rio to Red Route

DAY 1: Sunday 3 Nov 2024

1st runner (Scott)

Start – Laredo Park

Route - North through Laredo on Santa Maria Ave 5 miles

North on 35 to Atalaya Ranch



2nd runner (Ben)

Start – Atalaya Ranch

Route – North on 35 to Encinal

Main street through Encinal approx. 1.5 miles

Back north on 35 through Artesia Wells

Continuing to Flozone in Cotulla



DAY 2: Monday 4 Nov 2024

1st runner

Start – Flozone in Cotulla (Airport Road)

Straight Dilley through on Business 35/main st

Route – North on 35 to Pearsall

North on South Oak St / Business 35 through town

End at Intersection of 35 and Business 35 HighQ Incorporated



2nd runner

Start – HighQ Incorporated

Route – North on 35

Continue through Moore

Just before Devine take County Rd 132 through Devine, Natalia, Lytle

Back to 35 to Pilot Travel Center in Von Ormy, Tx

End Pilot Travel Center



DAY 3: Tuesday 5 Nov 2024

1st runner

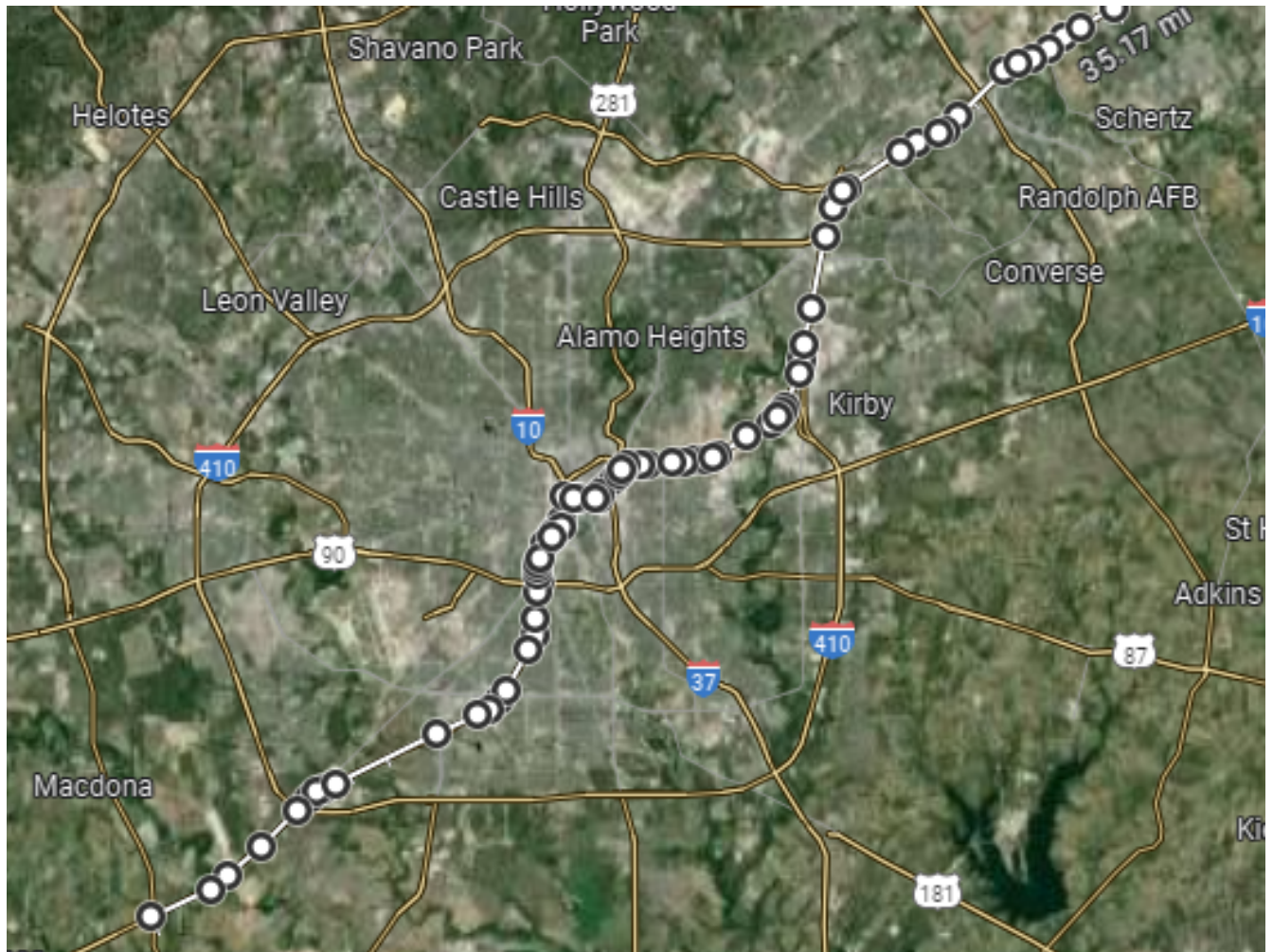
Start – Pilot Travel Center

Route – North on 35 into San Antonio (approx. 15.5. miles)

Turn right and head East Houston Street towards the Alamo

Turn north on Alamo Street back to 35

Continue north on 35 to the HEB Plus in Selma



2nd runner

Start – HEB Plus in Selma

Route – North on 35 continuing through New Braunfels

Turn left onto Hunter Road / 1102 (approx. 1 mile before Santa's Ranch)

Continue on Hunter Road, until it becomes Hopkins

Stay on Hopkins through downtown San Marcos

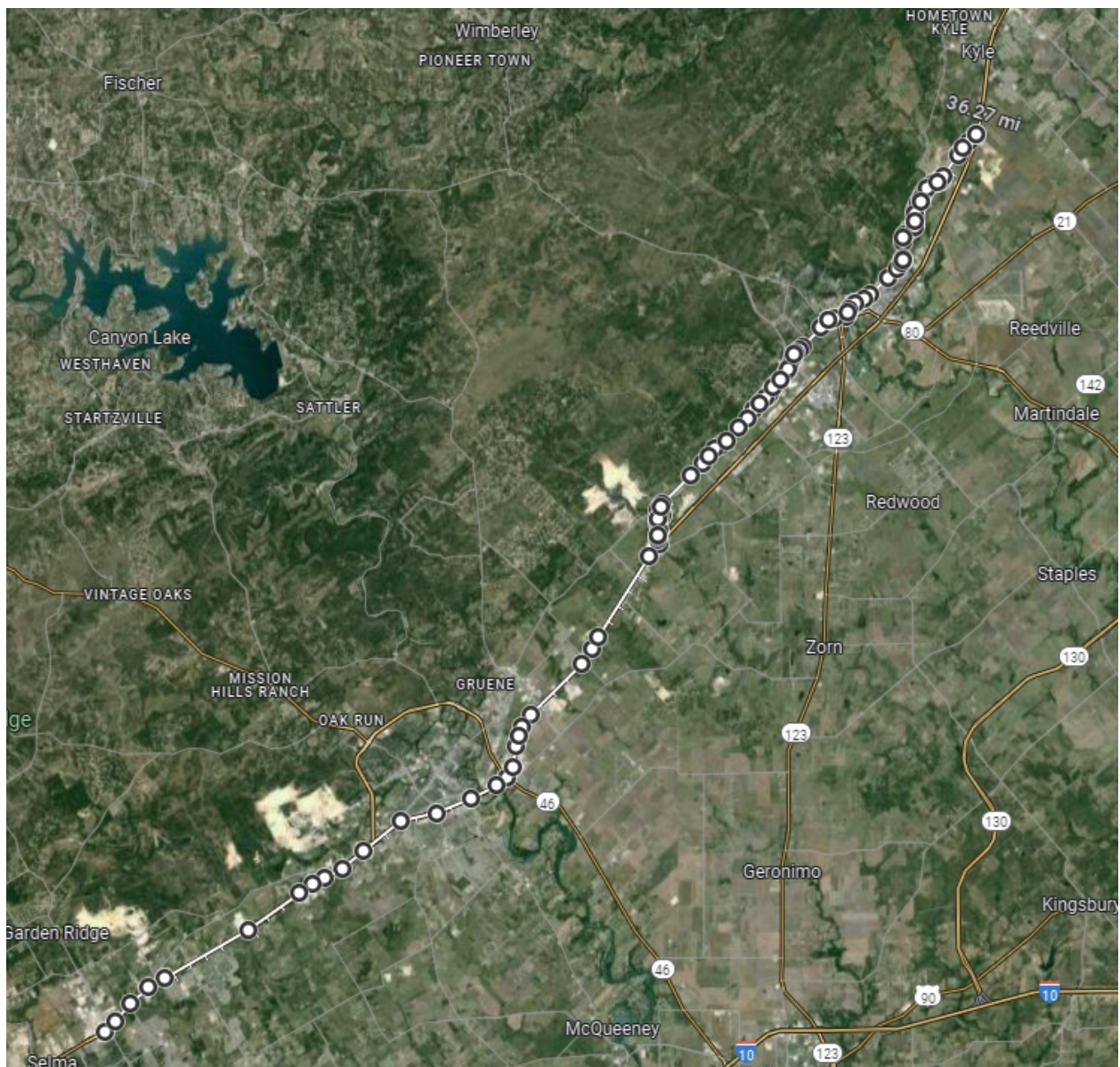
Turn left on University pass by Sewell Park

Right on Aquarina Springs

Left on Post Road

Continue to 35 where Post Road dead ends.

End – Post Road at 35



DAY 4: Wednesday 6 Nov 2024

1st runner

Start – Post Road at 35

Route – North on 35 through Kyle and Buda until Slaughter

At city limit, toll road 45 is where APD officers will start running

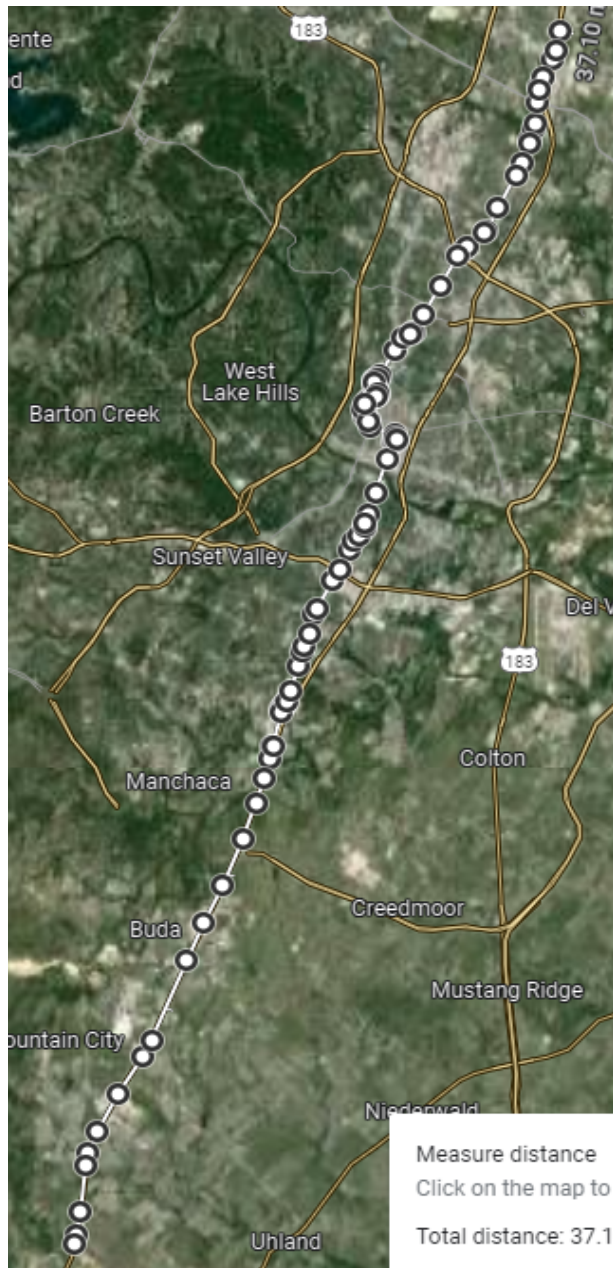
Left on Slaughter then Right on Congress

Congress to the Capitol and the Peace Officers Memorial

Continue on Congress to 15th turn left going west on 15th street

Right on Lamar, stay on Lamar until 35

North on 35 to Austin City Limits at Cook Walden / Capitol Park Cemetery

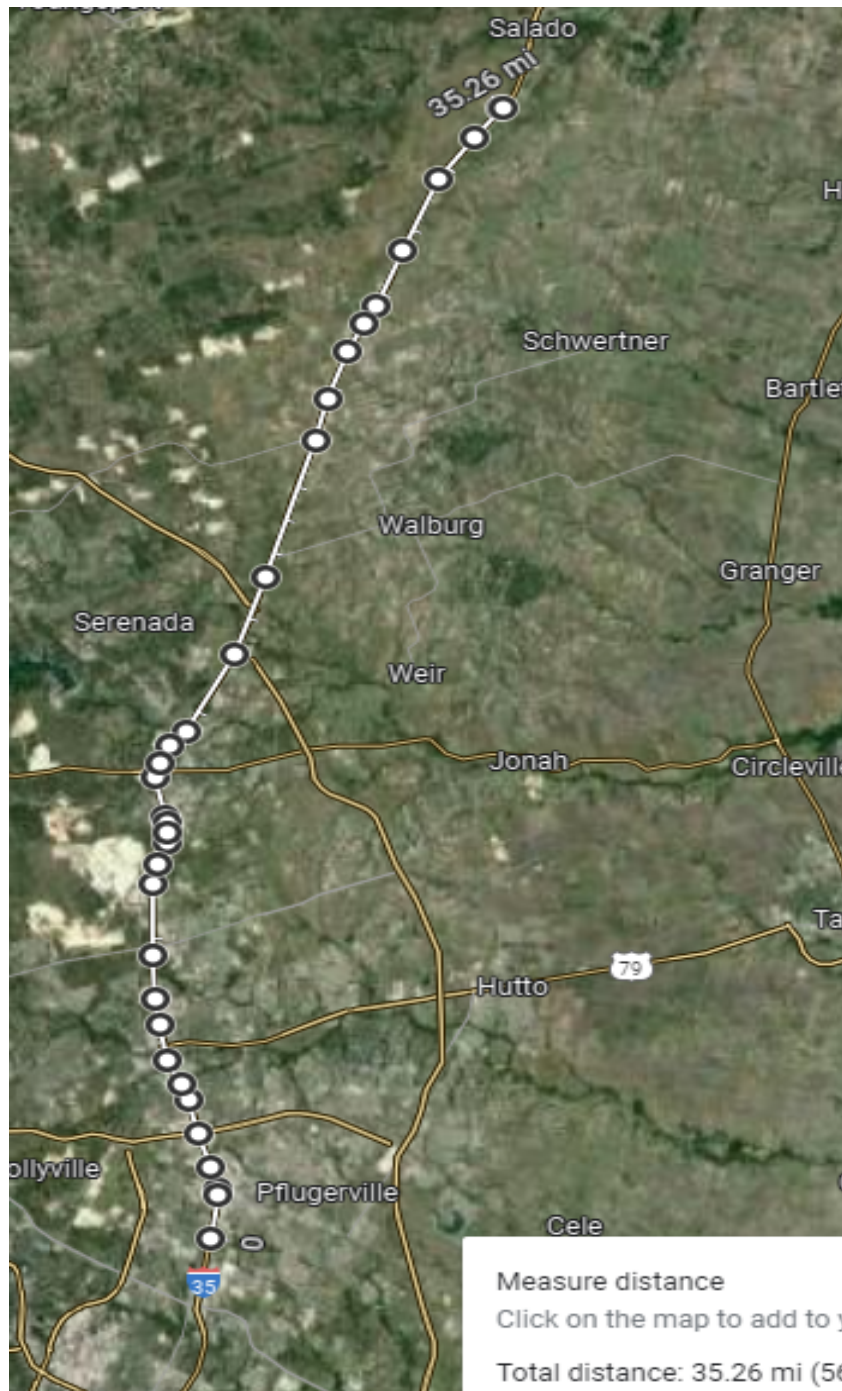


2nd runner

Start – Cook Walden Cemetery

Route – North on 35 through Round Rock, Georgetown and Jarrell

Stop at Bell County Safety Rest stop just south of Salado



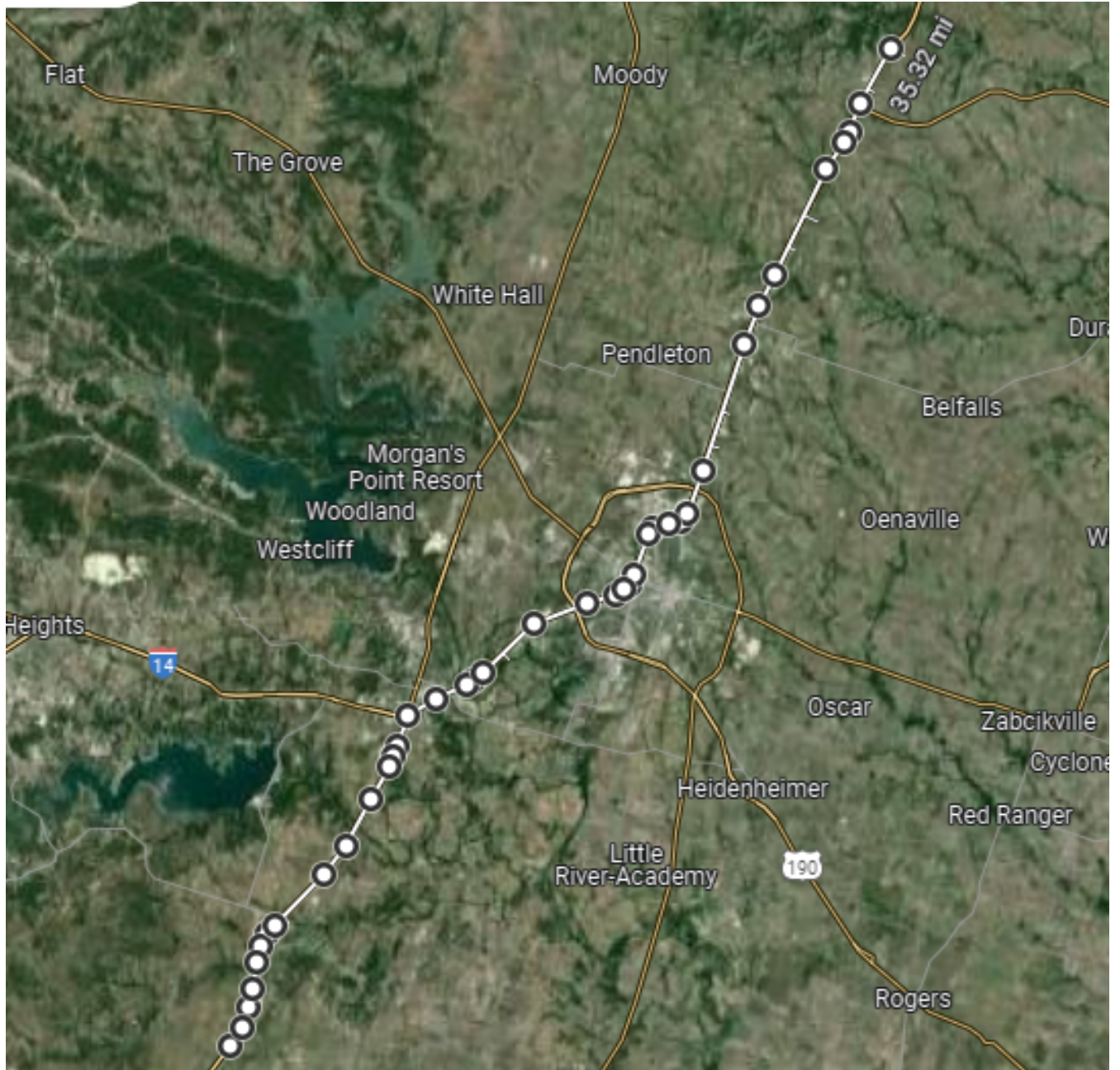
DAY 5: Thursday 7 Nov 2024

1st runner

Start – Bell County Safety Rest stop south of Salado

Route – North on 35 through Salado, Troy, Temple

Stop across from Bruceville Lane at 35 (landmark Be Safe Storage)

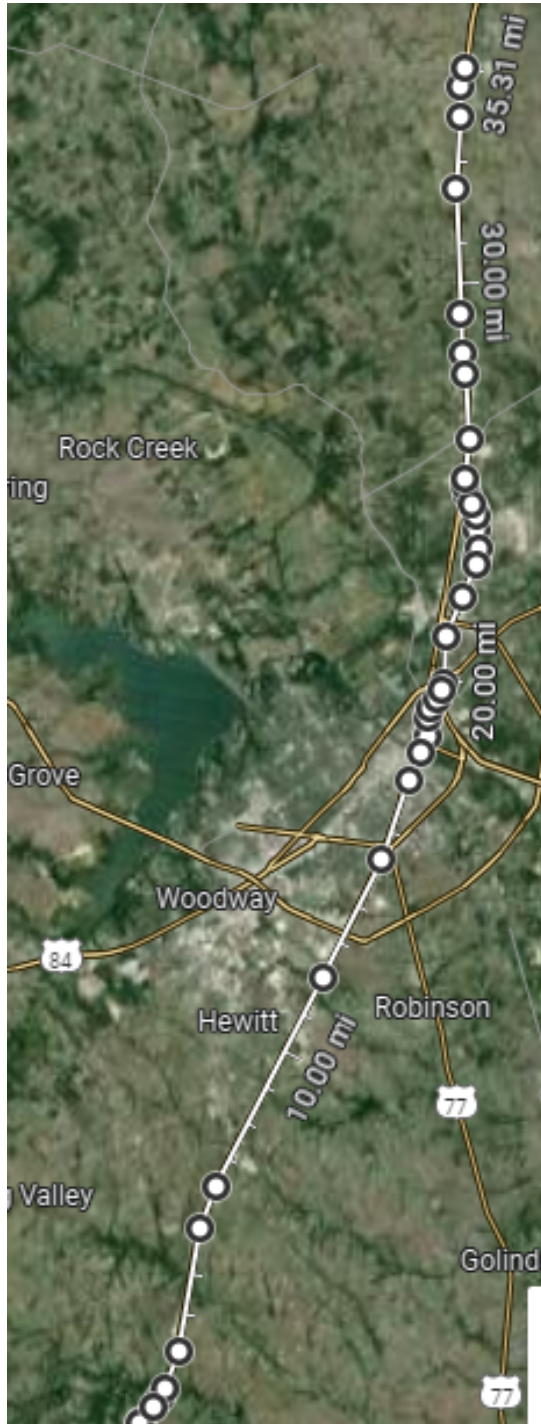


2nd runner

Start – Be Safe Storage

Route – North on 35 through Belmead to West

Stop in West at Slovaks / Exxon



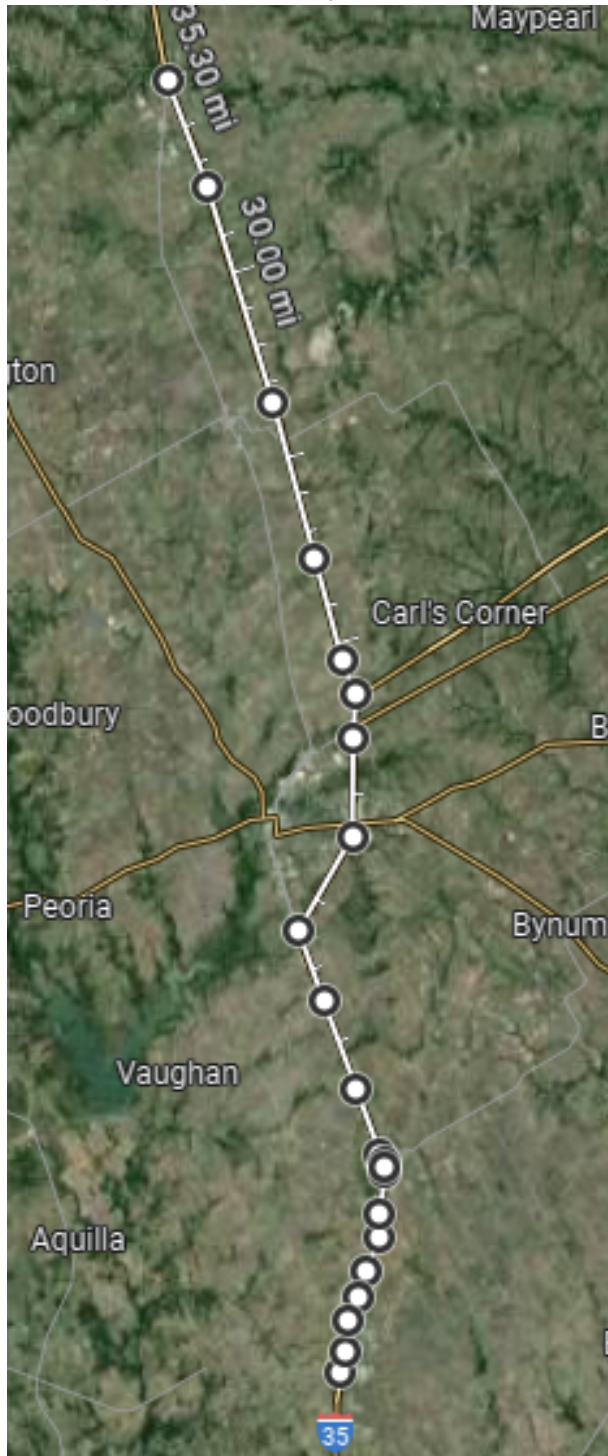
DAY 6: Friday 8 Nov 2024

1st runner

Start – Slovaks / Exxon in West

Route – North on 35 to 35 West towards Fort Worth

Stop at 35 and 201A (landmark – Leland Barns and Shed)

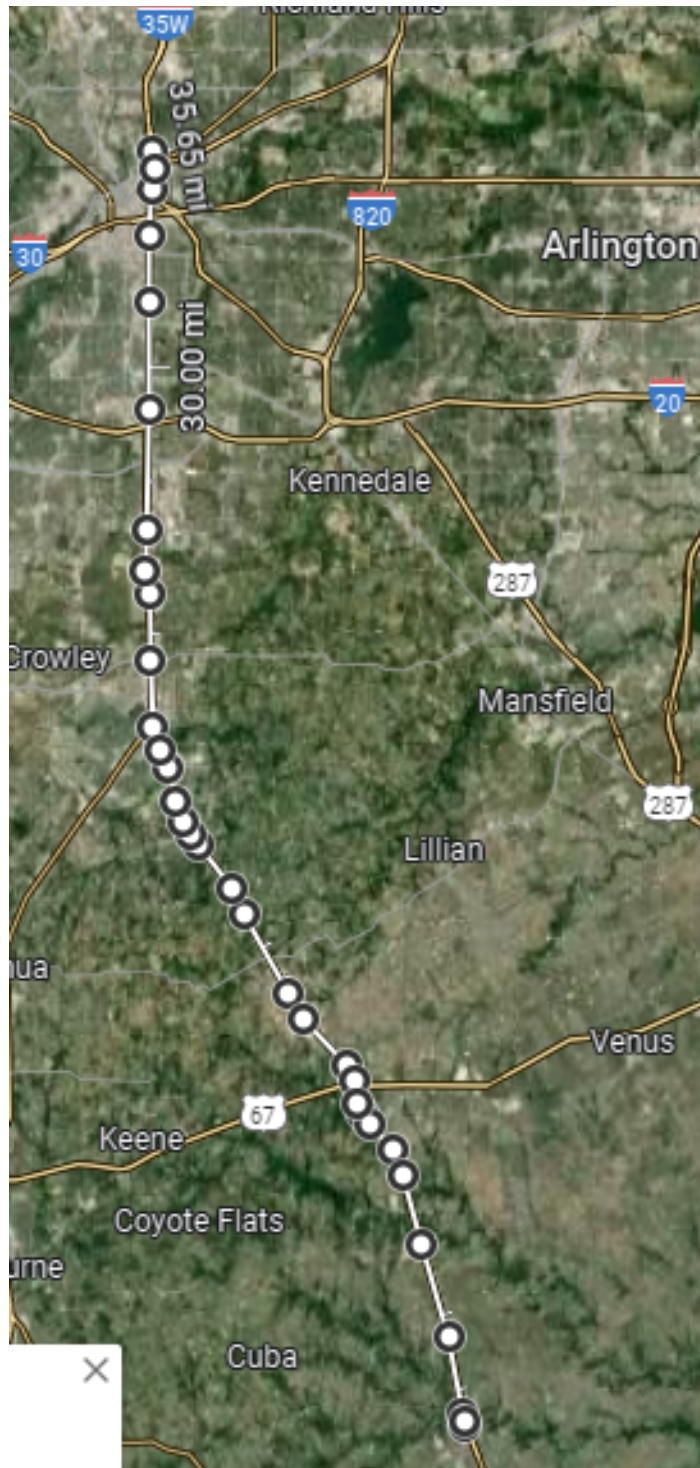


2nd runner

Start – Leland Barns and Shed

Route – On 35W into Fort Worth

Stop at Extra Space Storage in the middle of Fort Worth.



DAY 7: Saturday 9 Nov 2024

1st runner

Start – Extra Space Storage

Route – Continue on 35W through the rest of Fort Worth

35W and 35E come back together in Denton

Stop at Camping World on I 35 in Denton



2nd runner

Start – Camping World in Denton

Route – Continue north 35 through Sanger and Gainesville to the Red River

Stop at Red!

